

Amble Town Council – Annual Parish Meeting Report

This year has been another busy year for the Town Council. We have continued to lobby NCC and local County Councillors to ensure that Amble is included in any NCC projects.

We have continued with our multiagency / organisation work with Neighbourhood Services and Northumbria Police during our Estate Walkabouts and will soon be working with neighbouring parishes on shared concerns. This ensures collaborative awareness for those involved in making Amble and the surrounding area a better place to be. Our meetings with Northumbria Police have provided a direct link to the officers for Amble and it is useful to receive updates on the information that they are able to share.

We meet regularly with the Highways Infrastructure Manager at NCC and this provides a direct line of contact with officers within NCC. We continue to ask questions about Coble Quay Walkway and safer crossing points in the town.

The Neighbourhood Plan Steering Group has been working very hard pulling together policies and data needed to support the development of a plan that works for Amble. There will be additional consultations taking place so please do keep your eyes peeled for them.

Our community website is up and running but will only be as good as the information on it and we are relying on you to make sure your information is up to date. Please contact the office if you would like to be added on to it.

As many of you know, the Town Councils monthly meeting is open to the public. We appreciate it may not be possible to attend these meetings every month but there is now a monthly roundup published after every meeting so that you can keep up to date on what is happening even without coming to the meeting. We do try to share our news on Facebook and the Town Councils website however we do appreciate that not everyone has access to the web.

Although not started yet we have worked hard to make sure the new toilet provision provided by NCC is fit for purpose and will last.

Unfortunately, our aspirations for a community hub at the former Amble First School site did not come to fruition due to staggering running and maintenance costs. We haven't given up yet but need to be sure that whatever we choose is sustainable and does not become a liability or financial burden on our residents.

We have finally, once again repaired the water feature at Paddlers Park. Sadly this may be the last time it can be repaired due to the ongoing costs of continuous vandalism.

In terms of Events for the Town, the Town Council has just recently had a commemorative event to mark 100 years since the unveiling of the Amble Clock Tower and War Memorial. We have our usual events this year too- such as the

Amble Civic Awards- and the annual Remembrance Day Service continues to be very well attended and is growing in attendance every year.

Each year the Council supports a number of community groups and organisations. This year grants have been awarded to:

- Escape Family Support
- James Calvert Spence College
- Young Citizen of the Year Award
- The Colony Music Festival
- Wag and Company North East
- Amble Cancer Support Group
- Great North Air Ambulance
- Amble Links Primary School
- King Edwin Primary School
- Barndale School

Despite the election, we have some wards uncontested and with vacancies so please do contact the office if you would be interested in getting involved. All members are assigned wards but prefer to work together as a team to get the best they can for the town.

As some of you may already know, we have a number of long-standing members leaving the Council. Cllrs Helen Lewis, Kate Morrison and myself have decided it is time to move on to new projects and other members have given us thanks citing our years of tremendous dedication, support and hard work. Maybe it is time to put our feet up.... For a little while anyway.

AMBLE CANCER DROP IN GROUP

After my wife, Danielle, passed in January 2023, I wanted to set up an Amble Cancer Group.

We had both been members of the Northumberland Cancer Patient and Carers Group (NCP&CG) and the Newcastle Hospitals Patient Perspective Information Group PPI based in the Bobby Robson Centre at the Freeman Hospital.

During my first ever walking group of 2023, I was lucky enough to meet Natalie, a social subscriber, from Coquet Medical Group. We agreed to help each other as she had a project too.

A year later we held our first group meeting in April 2024. With financial help from Amble Town Council and facilities from Trinity Methodist Church.

There were 6 at the first meeting, the last meeting we had 8, with a further 3 on our register.

During our first year we realised we had need of professionals to attend our meetings to explain what they could do for us in the community and answer questions the group needed answers to.

The Newcastle and Northumberland Groups gave me access to such professionals.

Therefore, from January this year, we arranged to have an organisation attend each month to detail the help they could give to the community in general and our group in particular. This has opened other avenues for the group to explore in the future and as we have just received more financial support from the Amble Town Council, one of these organisations is helping us to develop our constitution and thus get a bank account.

With connections to such organisations, we have been able to find answers to patients' questions like where to find other groups, treatment side effects and get opportunities to inform inside our own contacts.

As we have seen over the past year, high profile members of the Royal Family have been directly affected by Cancer. It crosses all boundaries including religion, race, wealth and culture.

To give an example of the impact we've had in the wider communities. A long-term friend of mine contacted me from Canada to ask for my help in

finding Cancer support groups, bereavement support groups and counselling. Obviously, they have knowledge of what we have been doing in Amble. They lost their best friend and business partner to Cancer diagnosed only 7 weeks ago.

They have a very high-profile job and are struggling under the pressure. How many others are out there not knowing where to turn to?

We meet last Wednesday of the month at Trinity Methodist Church Hall, Percy Street, Amble.

Amble Development Trust

Regeneration & Physical Development:

At the welfare we have planted the fruit trees to begin creating a community orchard. Other plans for the land are to add seating and re-establish the rose garden. The seats have been provided by Warkworth Harbour Commissioners who received funding for Chatty Seats – seats where anyone is welcome to sit and while away some time. The idea is to bring a communal space for all to the welfare – for young and old, lonely, active or just sharing and caring. The space is for everyone.

While the physical aspect of Bord Waalk is complete we are looking at using some of the promotion budget to create drone footage that will follow the trail while capturing the towns assets to use as town promotion. Matthew Connolly is working with JCSC to try to get the students involved to make this a community activity that will be available to businesses and organisations alike.

The work on Amble Neighbourhood Plan (NDP) progresses with sterling concentrated input from the steering group. While this is a Town Council initiative the work is carried out by volunteers. As you are aware the town of Amble like many others in Northumberland has had more than its share of housing development, and most of it not necessarily what the community actually needs. To this end the NDP Group applied for and were successful in securing funds to have a Housing Needs Assessment carried out. This study looks at all employment, wages, current housing stock, developments in planning and housing lists to determine what housing is required by the community. This will take a couple of months to carry out, but in the meantime the group are looking at green spaces, development sites and non-designated heritage assets. All the work required to offer as complete a picture as possible.

We continue to take part in government funded workshops related to community housing, that are to report back on their findings.

We have offered ideas for local sites that may be suitable for affordable housing but to-date we have not had any feedback.

We retain the view that affordable homes and Section 106 money should be kept in the area of development. Affordable homes could be managed by organisations similar to the Trust who have existing policies to ensure members of the local community (living or working in the town or have a close family relationship) most in need are given first option on any available property. This view isn't in line with NCC or most government policies, however it has become more apparent that where there is a proven record of delivery there is an opportunity to fund ongoing regeneration works, so everyone benefits.

It's hard to believe that the Harbour Village will celebrate its 10th birthday this year. Bart as the Harbour Village Coordinator is organising a bit of a do!

The Seafood Centre has been reorganised with the hatchery closer to the entrance door and sales counter moved across the towards the window, to make the layout more user friendly. Given the value the hatchery has as a conservation project and visitor attraction we remain fully supportive of the initiative.

The Welfare park:

At long last we were able to announce that the Playzone works were to commence. This has been a long and at times arduous process. Never having worked with the Football Foundation before we were not prepared for the length of time taken to respond to queries relating to various conditions. We have questioned the costs which we tried to reduce, but to no avail. When working from an agreed framework you have to accept how astronomical some costs can be. We acknowledge that the Trust isn't paying for this work and are grateful to the Football Foundation

and NCC for their matched funding through S106 but feel that more realistic costs could have supported additional projects.

At this stage I will outline one of the conditions attached to the funding and that is that the Playzone bookings must be paid for. This is not our choice, but a condition of funding. The booking system alone will cost the Trust a thousand pounds a year to operate and additional funding is expected to be

set aside for maintenance. All very costly but we are trying to provide as varied leisure facilities as we can.

As the start to the Playzone was increasingly delayed we had major concerns about this and the development of the new JCSC building coinciding as NCC and the developer has asked for access to the welfare to create a temporary car park on what will eventually be the tennis courts at JCSC. For this to be granted we asked that car parking issues on Acklington Road were resolved by allowing the football teams to use the school car park. Simple ask, we thought, not quite so easy to find agreement to. I have to say the new head of JCSC has been extremely accommodating once he understood what the problems were. He immediately set a plan in place to allow the access which we and I'm sure Acklington Road residents greatly appreciate.

Only recently, and after asking many times we were informed that JCSC developer would not require access over the welfare as another route had been agreed.

We do however still require information on what works NCC would like to carry out in the welfare as it is their 'park and stride' route from the car park, which will be on their existing site adjacent to the new development. Again, this has been requested many times and should be available now the project has gone through detailed design to contract stage.

At the time of writing the Playzone is progressing well, and the contractors are really good to work with. – and a bacon butty now and again is appreciated!

The Ambler:

The Ambler celebrated its 25th Birthday earlier this year and publication of 150 issues. It continues to play a major role in keeping the community informed of local news and happenings. The publication highlights newsworthy issues as well as taking on challenges identified by the community and being a source of local information. We are grateful to the dedicated team of volunteers who work alongside the editor and give so freely of their time in order to bring the bimonthly newspaper to your door.

Financial support:

Financial year 2024 -2025 saw our core income mainly dependent upon our own income generation, with some additional funds gained through project management.

Rental income from office, retail and housing accommodation are our main sources of income and allow the Trust to contribute in excess of £90k into the community annually through various projects and resources.

Other financial support has come in the form of grants from the Community Foundation, NCC councillor members small grants via Cllr Clark, Northumberland County Council, Football Foundation, Butler Ember Charity via Jeff Watson and also personal donations to The Ambler.

We offer our thanks to all funders for their continued support.

Staff & profile:

Amble Development Trust profile remains largely the same with Matthew Connolly joining the Trust team.

Anna Williams has continued to deliver The Ambler and Julie Lilburn carries out Trust administration as well as being available via email to assist with CV 's and job-related enquiries.

Sandy Higson AKA The Mad Jam Woman provides the preserve making expertise and continues to make Pride of Northumbria range of preserves, and winner of more accolades for her wonderful marmalades.

Julia Aston and Matthew Connolly carry out day to day management duties, strategic/policy/budget/business planning and asset management, as well as acting as the Trusts representatives on various committees.

ADT Northumberland Ltd the Trusts trading arm employs the Lobster Hatchery staff, alongside the Harbour Village staff.

In terms of profile, we continue as members of Locality and participate within FONDT activities (Federation of Northumberland Development Trusts).

The Year Ahead:

On regeneration we offered options for the existing gym site at JCSC, which has facilities that will not be moved to or included in the new build. The climbing wall and dance studio provide additional options that we feel could create a leisure and sports village when combining the new, existing and welfare amenities. For us it seems to be a plan worth pursuing and an asset the town would support.

Likewise, we feel the old Edwin Street school site could provide a location for affordable housing. NCC had confirmed they don't have plans for the site but have carried out copious studies on affordable and social housing. As the school site sits in a residential area affordable housing would appear to be a good fit. We have also looked at prefab units that could be suitable for young and /or single people.

We will continue supporting the NDP steering group. We will also look at how we can work with and support the creative sector. This is a growing industry and one that appears to be capturing the attention of many in the town through Drywater Arts community based workshops and the exhibitions and Crit sessions being run at the Dovecote Centre. There is a lot more to explore and we are already in conversation with the Cultural and Regeneration Officers at Northumberland County Council to see what opportunities could present themselves in funding terms.

We continue to participate in the Coastal Network which is in discussions with the government about creating a post for a Coastal Minister. As with many coastal communities we fall between rural and urban considerations. If the role was developed the minister could advocate for coastal communities with budgets to assist with projects and regeneration.

Matthew Connolly's role as chair of Amble Youth Project and links with James Calvert Spence College present opportunities to link up to support our young people that open up new opportunities in this sector. It's all about working with and joining up the different organisations to create scaled opportunities rather than disparate groups competing!

Taking our experience of high street properties, we are pleased to see new businesses locating onto Queen Street. It's very heartening to know Amble is attracting new businesses.

We have recently taken part in a government backed consultation on housing and how organisations such as the Trust could fund their purchases as it becomes obvious that organisations that are based in the community and have policies that support tenancies to keep

homes for the local workforce wherever possible (affordable is based on a percentage of local market value) with further investment in communities.

The objectives of the Trust remain to assist the town to achieve its potential to this end we will continue to explore opportunities and working partner arrangements to achieve this goal to ensure we can carry on enhancing our town for the benefit of all.

**AMBLE FOOD BANK
REPORT
for the
AMBLE ANNUAL PARISH
MEETING
May 2025**



Introduction

Amble Food Bank (AFB) became a registered charity in October 2021 (Registered Charity Number 1196268). It is also now registered with HMRC and donors are able to Gift Aid their donations. It continues to have its base at Trinity Methodist Church on Percy Street, Amble.

AFB is currently run by a group of 21 volunteers, five of whom are trustees of the charity. In January 2025 Paul Newman took over from Terry Long as Chair and we also had a change of Treasurer. Over the last year we have recruited new volunteers to our team.

We are a voluntary organisation serving Amble and its surrounding communities. Our clients live in the Amble, Warkworth, Hadston and the Broomhill areas and most receive a food parcel on a fortnightly basis.

We have a dedicated team of drivers and packers. Only in exceptional cases do clients collect from our food bank base. Deliveries go out every Tuesday and Thursday morning, 50-51 weeks a year with a significant number of ad hoc emergency deliveries in addition to this.

The total number of clients fluctuates, but overall demand is steadily increasing. We usually see an increase during the winter months when clients face additional pressures on their finances due to additional heating expenses. Referrals do tend to drop off slightly during summer months. We have also noticed an increase in the number of working individuals who are being referred to us for support.

Between 1st November 2023 and 1st November 2024 AFB delivered to 1,915 households, an average of 37 deliveries per week. We are currently delivering to around 60 households fortnightly, an average of 30 deliveries per week. We also currently have around 20 clients who have been asked to seek a fresh referral and they are likely to return to us once they have been assessed by an appropriate agency. AFB has evolved greatly since its early days when a handful of parcels were left at CAB by a couple of volunteers on an occasional basis for clients that may be suffering hardship.

Up until its closure earlier this year, perishable food that was reaching its 'best by date' at the Co-op was donated to us at the close of business on Sundays (Co-op Fare Share) and distributed to families on Sunday afternoons on a rotational basis. In 2024 AFB delivered to over 200 households via the Sunday deliveries. This meant that our clients with the greatest needs received fresh food in addition to their regular food parcel.

AFB continues to have robust referral and review policies. Clients can be referred through a number of channels. These may include Northumberland County Council (NCC), a social prescriber, social worker or health visitor. Clients very occasionally self-refer. No individual or family is refused a food parcel, but after receipt of their first one, clients are requested to acquire an official referral – usually via NCC, unless they have a key worker. All clients are reviewed on a strict 3 monthly basis and require a fresh financial review and referral in order to continue receiving a food parcel. Records of all clients and referrals are kept in accordance with GDPR.

All volunteers coming into direct contact with clients have gone through Disclosure Barring Service (DBS) checks, and volunteers also regularly refresh their safeguarding awareness training, along with any other relevant training. In addition, there are two named Safeguarding Designated Leads who have also undertaken specific Designated Person for Safeguarding Adults and Children

training. We make it our duty to care about the welfare of our clients, and there have been a few occasions when we have had concerns about individual clients that we see on a regular basis, and we have referred them to the One Call team to be assessed by them.

Food parcels are designed to supplement an individual's, couple's, or a family's general food shopping. They contain staple ambient goods such as pasta, rice, cereals, pasta sauce, and a variety of tinned items, such as soup, meat, fish, vegetables etc. They will also receive toiletry items if these are available. We always find out if new clients have any specific dietary requirements or allergies. During the Easter and Christmas school breaks we supplement parcels with additional seasonal items – especially for families with children. We are fortunate to receive many of these items from our local communities.

Not infrequently we receive referrals informing us that clients are in severe food hardship. In this instance they may also receive a Morrison's gift voucher to enable them to buy a few fresh items (this replaces the previous enhanced shop that we used to do for them). Where possible, we try to deliver an emergency parcel on the day of referral. In some circumstances existing clients occasionally reach crisis point and we will deliver an extra emergency parcel to them (this can include weekends too if volunteers are available).

All food is stored at our base. We were inspected by Environmental Health in April 2022 and received a five star Food Hygiene rating and were deemed to be "a well-run food bank."

We rely on our very generous local communities for donations of food to AFB. Members of the public can donate food items at Amble Tesco Express, Hadston Co-op or they can purchase a pick-up bag from Amble Morrison's, as well as dropping off loose items there. AFB works very closely with all supermarkets, and volunteers collect this food several times a week. Since the closure of the Co-op, food donations have dipped significantly. We are always on the lookout for retail outlets that would be willing to act as a drop-off point for food donations (particularly at the top end of Queen Street).

AFB has also signed up to the Neighbourly scheme and we have linked up closely with Alnwick Aldi and collect weekly from them – both perishable items that are reaching their 'best by date' and items customers have donated to their food bin. We also purchase shopping from them on a weekly basis.

There are also collection tins at the The Farm Bakery, The Boat Shed Gallery pod at Amble Harbour Village and the HMP Northumberland Farm Shop. Local schools and churches regularly collect food items that they donate to AFB, especially around Harvest Festival and Christmas. Heatherdale Care home in Broomhill continue to collect food donations for us in conjunction with Iceland Morpeth who very kindly donate food items to us. There are also some small local businesses and organisations who donate food to AFB, including Amble Women's Institute, and Warkworth Women's Institute. A number of local organisations and businesses regularly hold fundraising events on behalf of AFB. Rigg and Furrow have organised a number of quizzes in aid of AFB and raised money for our charity.

We have also been fortunate to receive generous donations from a number of North East businesses through their community funds. In addition we are fortunate to receive some one off monetary donations to our bank account and a number of individuals have set up monthly standing orders.

Despite the generosity of our local communities donating both food items and money, due to increasing numbers of referrals we still have to purchase food items to supplement these donations. This is usually a few times a week and tends to be from Morrison's. We have a dedicated shopping team of volunteers who carry this out. In 2024 we again spent in excess of £30, 000 on food and other items.

We continue to work in partnership with the Farm Shop at HMP Northumberland run by the charity The Oswin Project. This is a great cause that creates chances for individuals with criminal records through training and employment and helps to give them a sense of achievement from learning and working. Every Friday we receive any unsold fresh produce from the farm shop. This may include baked goods such as bread and cakes and also fruit and vegetables (grown in the prison market gardens by prisoners). These then go out to our clients. Feedback has been extremely positive since this collaboration started in 2023.

In addition to the above, AFB has developed strong community links and works closely with a number of professionals who know our communities well. We work closely with Social Prescribers at the local health centre (NPC Amble and Broomhill, formerly Coquet Medical Group), Citizen's Advice and local schools and churches.

We also support families who have pets in their household. We continue to work closely with the charity Alexa's Canine Trust (ACT) who regularly donate pet food to us. Along with ACT we firmly believe that it is in the pets' best interests to remain with their owner(s). Providing pet food for them makes this all the more likely and helps to reduce pet poverty.

We continue to have a strong social media presence and regularly post useful 'signposting' information for our communities. We regularly publish thank you posts to individuals and organisations for their support and donations. We continue to build up AFB's Facebook audience and now have in excess of 1,000 followers – again our Facebook site is run solely by volunteers. We do receive a number of self-referrals and enquiries via our AFB page. We also provide regular Food Bank Updates to the Ambler and Pelican Community Newspapers.

The Future

We have recently recruited more volunteers to AFB as referrals increase and duties expand. We may well need to recruit further volunteers in the future if the number of clients on our caseload continues to rise and in order to accommodate the extra time commitment required by volunteers to support emergency food parcel deliveries, as well as increased shopping duties.

We are currently reviewing our accommodation requirements. Our current base is small and challenging in relation to space for ambient and fresh food storage and with regard to space for the bi-weekly packing of food parcels. We are keen to find affordable premises that will better suit our needs.

We continue to explore ways of enhancing our social media and other communication channels to facilitate food and monetary donations to AFB.

The Amble Food Bank Team
May 2025

COMPANY REPORT

**NTC TOURING
THEATRE COMPANY
LTD**

NTC
**TOURING
THEATRE
COMPANY**

DATE :
12/05/2025

Lewis Matthews (Louis Roberts),
Artistic Director,
NTC Touring Theatre Company Ltd

NTC TOURING
THEATRE
COMPANY
Company Report:

Theatre Activities

NTC Touring Theatre Company has been busy with lots of new plays and festivals. Here's a look at what we've been up to, including our research days, show highlights, and what's coming up next.

Research and Development Days

We had two Research and Development (RnD) days where we dug into new versions of Jekyll and Hyde and The Body Snatcher. These days were super helpful in shaping how we want to bring these classic stories to life with a fresh twist.

Show Highlights

After our RnD days, we put on a new version of Jekyll and Hyde at the Duns PlayFest. Philip Harrison returned to play the lead, and we welcomed Chris Connel and Steven Stobbs, who joined us for the first time. Alice Byrne directed the show, Lewis Matthews handled stage management, and Lucy Desbrow created original music.

The show was extremely well received and will be heading back to Duns at Halloween with our double-feature of Jekyll and Hyde and The Body Snatcher.

Festival News

We snagged a spot at the Durham Fringe Festival to showcase 'The Body Snatcher' with the same fantastic cast. Even though we're slightly over budget right now, this choice will save us time and money when we take the shows on tour as a double-feature later as rehearsal time will be minimised and accommodation costs reduced. Chris Connel will also be commuting throughout rehearsals and the tour meaning one less actor for Natalie to house!

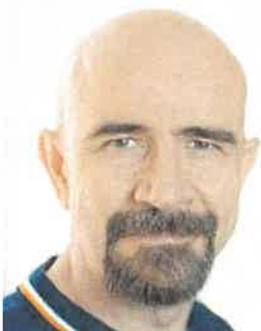
What's Next

Alice Byrne is working hard to get our Sherlock production into more commercial venues for a short tour next year. Her goal is to reach more people and make the show more profitable.

Jim Donnelly is chatting with Alnwick StoryFest about NTC creating a new play based on "Arty Visits Amble." We're aiming to have this ready for February next year, and it promises to be a fresh and engaging experience for our audiences, and continues our working relationship with Alnwick StoryFest.

Natalie continues to market both Autumn and Christmas Tours which are selling well at present and we have also once again begun a working relationship with Highlights Rural Touring scheme to help promote and sell the shows.

Chris Connel



Steven Stobbs



Philip Harrison





The Dovecote Centre

- Working alongside NTC Chair Jim Donnelly, NTC have continued to run our monthly Cinema club showing a varied selection of movies throughout the year, with average attendance between 30-40.



- The Amble Harbour Lights choir continue to meet once a week on a Thursday.
- Amble WI have been using the main hall for their meetings since February and seem to be very happy with the arrangement.
- Dovecote Street Arts continue to run their monthly Crit Events which remain a huge success.
- NTC now has a pilates class that runs every Wednesday evening in the main hall.
- On Friday's, we now have a painting group that use the community room

- The Green room conversion into an art gallery is almost complete and we will be looking to utilise this space to the fullest in order to maximise it's potential revenue stream, whether this be exhibitions or events.
- On that note, we have provisionally pencilled in an opening exhibition. Greener Amble will be running an event at the Dovecote Centre in October around the themes
- of sustainability and environmental wellbeing.
- The Dovecote Centre was once again used as a polling station in the local elections (it's just a shame about the result!)
- The Amble banking hub is up and running. Although initially off to a slow start, this is a
- guaranteed income for NTC over 6 months with the added option of more after this,so it is in our best interests for this to be a success.

In conclusion

Despite obtaining several grants early in the year from The Leche Trust, Adderstone Trust, Willan Trust and Sylvia Waddilove Foundation, funding continues to be a challenge and is proving to be an almost constant job, with a total of over 92 bids submitted over the last 12 months. This is done on a team 2.4 FTE Staff who are working extremely hard to keep the company going. Our venue hire revenue streams have increased significantly over the last 3-4 months but ultimately we are still at the mercy of grants available to us and it is increasingly becoming a case of more people applying than grants available, but as Bryan Ellis, our former Chair, always said "It's a case of last man standing and we simply must refuse to die". Which is what we are endeavouring to do.

This is not meant to end the report on a negative note, but it is important to remember the reality of our situation and have a thorough understanding of the work and effort that is required simply to keep the lights on and doors open.

Once again all of us here at NTC would like to thank our Trustees for their continued support.

Many thanks and kind regards,
Lewis Matthews,
Artistic Director.
NTC Touring Theatre Company Ltd

Barndale by the Sea School

Barndale, in Alnwick, has grown in demand in recent years which allowed for the specialist school to be opened in Amble.

It is the only residential school within the local area, known as "sleepy school" by the children.

An open day is pending so that visitors can see our fantastic site.

Currently there are 20 children however this is expected to increase to 30 in September.

Barndale are looking for volunteers to help with odd jobs, projects and grass cutting etc. Barndale welcomes donations and are currently looking at ways to fundraise for new play equipment.

They are also looking for household goods to support their Life Skills Room to help students learn life skills for when they leave so that they can live independently.

The school motto is- "What I learn today, prepares me for tomorrow"

Annual Parish Meeting

Amble update May 2025

Border Links meets here at Fourways 2 on Monday, Tuesday and Friday. We have been running in Amble since September 2007. We provide training and social opportunities for adults with learning disabilities.

Our Monday group enjoys working on their ICT, literacy and numeracy skills. Money skills have been a special interest. One member has now been promoted to using the till in their volunteering role as a result of the skills they have gained.

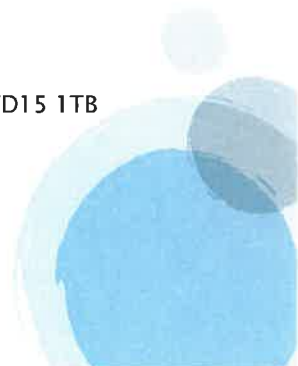
Tuesday group are busy setting up a Soup Social which they hope to start in the Autumn. We have received some funding from Northumberland County Council Community Chest fund (thank you)

They are busy sourcing equipment and training to run these events and look forward to welcoming people along. Further details will be available nearer the time so please look out on our social media platforms. If anyone would like more information, please let me have your contact details and we will ensure they are sent to you before we start.

On both Monday and Tuesday, the groups are learning about The Body and How it Works, Personal image, Personal Interests, Lunch clubs they also enjoy watering the allotment when required.

On a Friday our main interest is the allotment. We have been very fortunate in receiving funding from Alwick Gardens, The Appletree Foundation and the Co-op Community Fund. This has allowed us to buy plants and equipment, mend the polytunnel and have individual raised beds for each of our members.

They are kept very busy with this project and are learning so much. If anyone in the local community would like to donate any compost we would be most appreciative.



The pond at the allotment will be cleaned out at some point and the whole area needs to be tidied up and cleared. We also need help putting up a chicken wire fence. If anyone would like to work with us on this we would love to hear from you

Our members would love to learn more about their local community - are there any groups whom we could visit to find out more or speakers who would be able to come along and tell them about what they do or what is happening in Amble so they could become involved.

I have brought some information leaflets for anyone who may be interested.

Any questions?



Dovecote Street Arts CIC

Dovecote Street Arts has had another busy and successful year with our monthly Crit programme offering a platform to local artists of all abilities going from strength to strength. We are regularly seeing between 30-40 attendees at our monthly events, held mainly at the Dovecote Centre. These are open to artists as well as interested members of the community. We were excited to recently launch 'The North Side', a new project being funded by Stronger Shores, which is being run on behalf of Durham Wildlife Trust, that will help to raise awareness of the marine plant seagrass amongst the local community through a creative programme.

Greener Amble Report for Parish Meeting 13/05/25

Greener Amble is a community led group that shares concerns for green matters and climate change in the Amble area.

We started meeting monthly September 2024. We meet on the first Thursday of the month at Dry Water Arts Centre 6.30pm for 7.00 pm until 8.45 pm.

We have been fortunate to receive support from Northumberland Wildlife Trust (NWT) Communities Neighbourhood project. This has helped us with room costs, printing etc until end of 2025. It also means we have had support and help from Communities Officer Natasha Hemsley and Raven Montague who work for NWT.

There are usually 13 + people at the meetings with 30 on the email list. We are getting interest from new people almost monthly. Many of the group are already active in supporting environmental matters through local initiatives. These include Warkworth and Amble Rivers group; Women's Workshop; litter picking, Youth Project and the churches.

As a group we have been working this year on what we think Greener Amble should look like, what our priorities should be, how we can organise and promote actions to improve and protect Amble's natural environment.

Our priorities are **Community, Environment, People**

What is most important to us are:

Environment/Wildlife/Nature

Sustainability

Water -sea/river estuary/streams

Speaking up

Communication/Information/Education

The group have come up with lots of ideas for each priority. These have been put together as a presentation.

Our plans going forward hope to include:

- Continuing to establish the Greener Amble group including exploring the right structure, communications etc
- Continuing to speak up about planning developments and decisions that impact on green space.
- Supporting litter picking initiatives such as Puffin Pickers and others involved in this.
- Organising a "Trash Bash" community event involving schools and children

- Workshop to design Greener Amble logo
- Visits to other organisations including Alnwick Community Orchard, Women's Workshop and Greener Berwick
- Exploring with Amble Development Trust and Orchard volunteers how we can together "grow" the orchard space.
- A gardening workshop "Plants not Plastic". This will look at pollinators, planting on a budget, and sustainability
- Holding the first Greener Amble Fair on October 18th 2025 to promote awareness and opportunities to be involved with local projects.

If you would like a pdf copy of the presentation or more information about Greener Amble please contact sue.greeneramble@gmail.com or Natasha.hemsley@northwt.org.uk

Neighbourhood Plan

The Amble Neighbourhood Plan is progressing well and we are now moving towards the development of a draft plan, using the expertise of our planning consultant we have employed through our Locality grant to help us formulate draft policies. We have identified a number of sites to be addressed through these policies, the sites have been shortlisted by our subcommittees and qualified by the Steering Group and Town Council. We have commissioned a Housing Needs Assessment through the organisation AECOM and are expecting the findings of this back at the end of May. This will offer crucially important, up-to-date information on housing needs within the Amble Parish. This will inform the development of our plan further, giving us a tangible evidence base to work with. We are looking at holding another community consultation event in September on the draft plan, with the hopes of completing the plan this year.

Pride in Amble

We have been in existence for over 15 years now. Despite a lack of numbers it is still in operation, this is borne out by the assistance given during the planting of the rose bed 'for the 100 years of the Clock Tower and in the Commemoration bed by the Radcliffe Memorial.

The rest of the team were from Amble Breakfast Club Veterans and some members of the Town Council, thank you to them, a great job.

P in A just looks after a small part of the Memorial Gardens especially the main raised bed near the tree. Fingers Crossed though as numbers increase we may move to other areas.

It was excellent to see the display of Tulips this year with many thanks to NCC Services and their generosity in giving us the used bulbs from beds around the Town. More to come for next year.

If anyone is interested in joining us please contact the Town Clerk for details. No experience is necessary just a warm body and be a willing volunteer, thank you!

Report from Amble WI May 2025

We meet every second Monday of the month, at 7pm in The Dovecote Center. We are around 50 members this year, with various age ranges and interests. This year we have supported, and will continue to do so, RNLI, Amble Food Bank, Cramlington Baby Care Unit and Love Lucy charities, along with other local worthy causes.

We have our usual outings ,including this year, Floors Castle, The Forge at Red Row, Morpeth Archery and many others. We also support local coffee houses and restaurants!!

This past year we have also been working very closely with Crag, undertaking weekly water testing at various local sites and passing on important data.

Our annual Remembrance Poppy Display was also put up for VE day, and will again go out for VJ day, along with Remembrance time as usual.

We are always keen to help and forge new links, so please do not hesitate ask!!

Clare O'Brien

President



FUND-RAISING 24/5	MAJOR BENEFICIARIES of Xmas Collections	COMMUNITY PROJECTS	SOCIAL ACTIVITIES
<p>The Christmas Street Collection and @ Morrison's resulted in a collection of £3000. The sleigh stopped at pre-determined locations and the public were invited to join with us. Some limits imposed by towing capability. All the Xmas funds go to local needy causes.</p> <p>Internally Generated Club Funds are used for international good causes like Shelterbox, Wateraid, etc. and for contributions to The Rotary Foundation</p> <p>2023 Biennial Golf Day @ Foxton yielded less than our usual £6000 The proceeds all went in equal shares to the GNAAS, The Sir Bobby Robson Foundation and The North Northumberland Hospice.</p> <p>The next Charity Golf Day is due to take place on 25th Sept 2025. Proving to be hard work getting sufficient teams to take part, due to economic unknowns.</p>	<ul style="list-style-type: none"> • Alpha Lodge • Xmas Voucher Scheme • Alnmouth Sea Scouts • Women's Workshop • The Dovecote Centre NTG • The Pelican • The Ambler • The Veterans Breakfast Club • Funding young persons to attend the week-long Rotary Youth Leadership Award Camp in Upper Teesdale in August. • Junior Football • Citizens Advice • Amble Youth Project • Others are yet to be finally agreed. • 23 organisations supported this year. <p>NB. Our apologies if promised funds have not materialised but we are having major problems with our bank in changing signatories on our accounts – we have not been able to transfer funds.</p>	<p>These include:</p> <ul style="list-style-type: none"> • Continued wildflower maintenance along Rotary Way. • Wild daffodil planting • Maintaining the Town Square planter in Amble • Martialling @ Carols on Bridge • Taking the sleigh to residential homes over Xmas • Rotary Way wildflower project destroyed by thoughtless mowing by NCC • RAW has taken part in events run by the Warkworth Green group. • RAW will be taking part in the Puffin Festival. • Help with parking and signage for the Warkworth Show. • Red Row Vintage Rally? • Several meetings have been public meetings when issues are of interest. 	<p>Activities this last year include</p> <ul style="list-style-type: none"> • Xmas Party • Pub Games evening • Indoor Bowls Evening • Remembrance Day • Village Treasure Hunt • Social Event @Shortridge Hall • Burn's Night Social • Trip to St. James Park • Planned Boat Trip @ Berwick • Escape Room Challenge, Morpeth+ meal out <p>Recent speakers/Topics:</p> <ul style="list-style-type: none"> • Fire and rescue Services • Women's Workshop • Stronger Shores • Lord Lieutenant of N'land • Head of Warkworth School • Art in our community • Kielder Observatory • Coquet Island History

We have made conscious efforts to change the traditional nature of Rotary gatherings, moving away from the dinner/Speaker format every week. More emphasis is being placed on social activities/outings. This year we have supported the Open Garden event at Shortridge Hall and will be doing a Hadrian's Wall Walk for End Polio. We are still conscious of the needs in our community and try to help when and where we can. Speakers very often tell us about problems and needs, so adding to our understanding of our community. We hope that the local community will join with us in some of our events, like the meeting tonight at the yacht club.

We have increased membership over the last year and further diversified the club with additional female members, and 4 Corporate members. This is for organisations and businesses wanting to associate with the International Rotary brand and demonstrate community and charitable activity. Rotary membership continues to be open to **anyone** and there are no mandatory attendance requirements. Contact information on our website and Facebook. We welcome all enquiries. **Contact Alan On 07805 444775**

The Puffin Lounge

The Puffin Lounge meets fortnightly and is primarily for people living with dementia and their families and carers.

Anyone is welcome to join us for light refreshments, games, fun, music, slide shows, occasional lunches, and chat at Dolphin Court. (Alternate Thursdays 2-4pm).

We are looking to extend the scope of The Puffin Lounge to include talks about claiming benefits, financial advice, access to odd-job-people, etc.

A spin-off from The Puffin Lounge is a small group of bereaved people who met occasionally for coffee and cake, or sometimes a meal. The conversations here are wide-ranging and most definitely do not concentrate on death, although the opportunity can be made to accommodate this.

Further information from
Sue Swanston 01665 711177

Thriving Together and Safer and Resilient Communities

Maria Ines Viana de Almeida

Thriving Together are an arm of the CAB and support the voluntary sector in Northumberland.

Thriving Together are keen to engage and get to know more about Amble organisations.

Michelle Redfern

Safer and resilient communities and are keen to do an event in Amble. It would be an opportunity to network and work together to ascertain what is lacking in social provision.

The next networking event will take place in July.

Currently have community hubs in Haltwhistle, Cramlington, Alnwick, Newbiggin.

Support planners and 1:1

Referral pathways

Risk assessments

Match to the correct service before reaching crisis point

Part of public protection comprising of 4x CSOs, tenancy enforcement, fly tipping, housing etc.

Recently awarded £90k for veteran community connector post, interviews commencing this week.

Amble Veterans Breakfast Club

For the past two years, Tri Service Veteran Men and Women have been meeting twice a month.

The numbers have increased to over 100 members.

There are no fees or agendas or any over riding authority involved.

It provides a venue for all Veterans to communicate using service language and banter, the same as they used to do when serving. For example a 20 minute breakfast takes 2 ½ hours . This we believe is an example of providing a need for this type of organisation.

Meetings are on the third Saturday of the month for Breakfast in the Amble Inn at 1000, and on the first Friday of the month at the Vista Bar 1600. The breakfast is Veterans only but families are welcome at the Vista Bar.

Families are catered for by the wives organisation called the “Plus ones” they meet regularly for coffee and breakfast and link with the Veterans for drinks at the Vista Bar.

Events have taken place and will continue. For example Military V Cancer Rugby match and the Xmas Ball at Gosforth Park. Xmas dinner is very popular. It is planned to hold an event at least 4 times a year.

Amble Veterans have linked up with a similar organisation for Vets in Prudhoe, which is proving to be very worthwhile. Ideas are swapped, how to make improvements and get information of interest from other military organisations who could be helpful. A number of speakers come to the breakfasts and talk about subjects that cannot be gathered elsewhere.

In addition our Committee are meeting other organisations who can help with our unique service problems which are not fully understood by our Civilian counterparts. Thriving Together, Armed Forces Forum, and the Northern Veterans for example.

Publicity that we promoted very vocally, led to two of our members being presented with their Xmas Island Medal, something that the Government glossed over. Unfortunately one of the medals had to be presented to their family. A great ceremony and many thanks to Caroline Pryor the Lord Lieutenant who gave her time and support.

If you are a Veteran or know of any in the area, please encourage them to get in touch, Thank you.